

Calian Hawaii teleport

Manage all your network elements from one central location

Satellite

A global gateway teleport bridging the US and Asia Pacific regions with the rest of the world using C, Ku, X and Ka band satellite bandwidth.

Terrestrial Fiber Networks

Easy access to multiple trans-Pacific fiber networks as well as diverse and redundant local loops. Calian maintains a point of presence for all major local carriers.

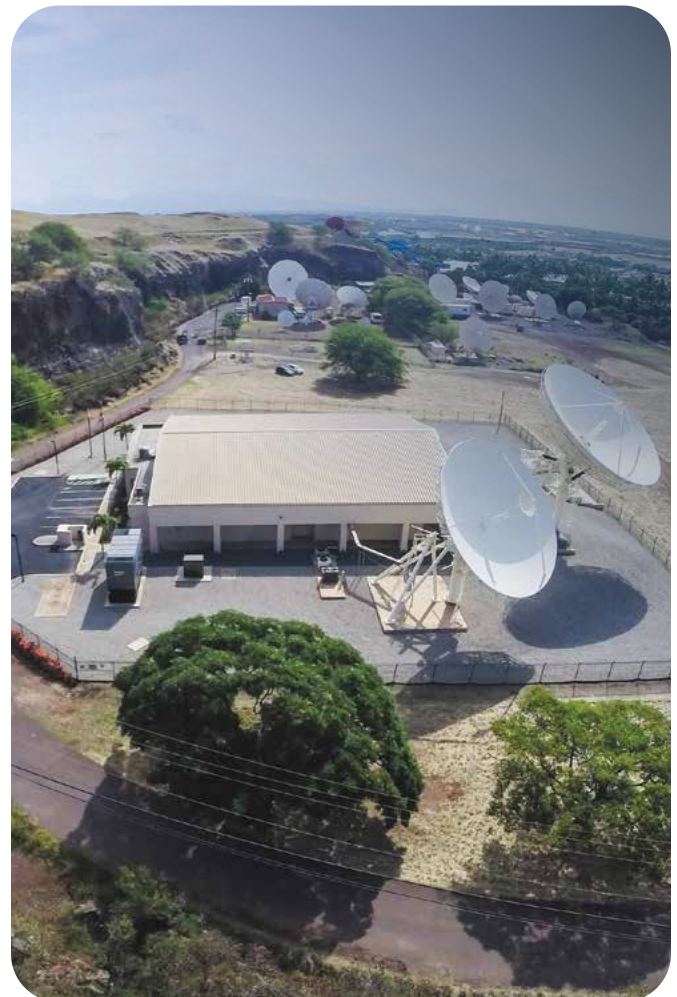
Experienced Staff

Our experienced and expert staff is on duty 24x7 to ensure your critical communication paths are always available. Customer service is our top priority.

Global Reach

Calian works with a variety of partners to facilitate connectivity and related services in every part of the world, seamlessly and efficiently.

Every minute of every day, Calian provides critical communication services to clients in over a dozen countries and territories. Whether providing connectivity to a remote hospital, critical network communications to military personnel, network access to ships and planes traversing the Pacific, or on-air television and media services across Asia and the Americas, our team of professionals constantly ensures our client's networks are online.



Satellite	Location East	Location West	Elevation Angle	Band
JCSAT 3A	128	232	5	C
JCSAT 5A	132	228	8	C
APSTAR 6	134	226	12	C
TELSTAR 18V (9.3m)	138	222	16	C & Ex-C
TELSTAR 18V (13m)	138	222	16	KU
APSTAR 9	142	218	20	C
MEASAT 2	148	212	22	C
JCSAT 2B (11m)	154	206	32	C
JCSAT 2B (8.1m)	154	206	32	KU
ABS-6 (9.3m)	159	201	35	C & Ex-Ku
IS 19	166	194	41	C
IS 19 (8.1m)	183	177	57	KU
INTELSAT 805	169	191	44	C
EUTELSAT 172B (9m)	172	188	48	KU
EUTELSAT 172B (11m)	172	188	48	C
EUTELSAT 172B HTS (9.3m)	172	188	48	Ka/Ku
EUTELSAT 174A (11m)	174	186	48	KU
EUTELSAT 174A (11m)	174	186	48	C
INTELSAT 18	180	180	57	C
NSS 9 (15.5m)	183	177	57	C
AMC 8 (2.5m)	221	139	60	KU
AMC 7	223	137	59	C
AMC 10	225	135	57	C
EUTELSAT 133WA (8.1M)	227	133	55	KU
GALAXY 15	227	133	55	C
AMC 11	229	131	54	C
SES 15 (4.8m)	231	129	52	Ku-Band
GALAXY 12	233	127	50	C
GALAXY 13 (2.5m)	233	127	50	KU
HORIZON-1 (8.1m)	233	127	47	KU
GALAXY 14 (G-14)	235	125	48	C
AMC 21	235	125	48	KU
GALAXY 23 (Echostar 9) (2.4m)	239	121	45	KU
GALAXY 23	239	121	45	C
ANIK F3	241	119	43	C & KU
VIASAT-1 (7.3m)	245	115	39	Ka
ANIK F2	248	111	35	C & KU
ANIK FIR (3.7m RX Only)	253	107	31	C & KU
ANIK G1	253	107	31	C, Ku & X
AMC 15	255	105	29	KU
AMC 18	255	105	29	C

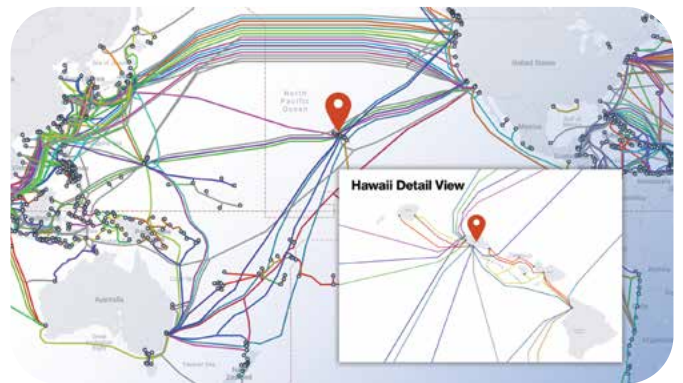
Satellite	Location East	Location West	Elevation Angle	Band
SES 22 (7.1m)	257	103	24	C
SES 3	257	103	24	KU
SES 1	259	101	25	C & KU
GALAXY 16	261	99	23	C & KU
GALAXY 19	263	97	21	C & KU
GALAXY 3C	265	95	19	C & KU
GALAXY 25 (IA-5)	267	93	17	C & KU
GALAXY 17	269	91	15	C
GALAXY 28	271	89	14	C & KU
SES 2	273	87	12	KU
AMC 16	275	85	10	KU

Calian takes pride in offering a carrier neutral environment where we do not compete with our customers. Instead, Calian is an extension of the new business development team for our customers and, using market intelligence, we advocate on their behalf with vendors. Our customers offer services including:

- Media Content Distribution and Backhaul**
 Live events, occasional use+; broadcast turnaround; time delaying, head-end, aggregation and distribution
- Mobility**
 Monitoring and guidance for vessel locations, velocity, and emergency services; mobile content delivery to ships and planes; remote traffic and logistics management; inflight entertainment and WiFi in the sky
- Military and Government Agency Services**
 Secure Facility – MAC II; secure network and transmission services; access to PACOM and DISA sites via fiber
- Oil & Gas (On & Offshore)**
 Crew welfare; real time performance metrics
- Disaster Recovery**
 Cellular backhaul; direct access to multiple fiber carriers; internet backbone presence for cloud services

Servicing such a diverse customer base helps ensure Calian is experienced with newer technologies and ever-changing vendor products.

Calian offers a unique point of intersection between numerous high-capacity trans-oceanic fiber networks and the satellite fleets of the Americas and Asia Pacific regions. In addition, Calian is directly connected to the AlohaNAP datacenter, a critical ‘meet-me’ point, establishing a strategic point of presence for trans-Pacific traffic and disaster recovery services.



Submarine Fiber Cables of the Pacific

