



## TruFleet® AVL Solution

Track your Fleet Anywhere, Anytime using LTE Cat M1 Cellular Telematics

Tired of playing phone tag to get the status updates you need to effectively manage your mobile workers? TruFleet's cost-effective GPS tracking system gives you around-the-clock access to your vehicles' location. With little infrastructure, you can track the movements of your fleet nationwide.

Whether you are managing a small or large fleet, TruFleet provides the rich data needed to effortlessly, and in real-time, track and manage commercial vehicles, trailers, and assets. From any browser you can access their location, view bread-crum trails and pull historical reports to optimize efficiency, enhance productivity and ensure the safety of your employees.



## TruFleet's GPS tracking system puts you in the passenger seat of every vehicle.

Small and discreet, the cellular tracking unit can be mounted on the dashboard or placed in the glove compartment to monitor driver behavior. TruFleet utilizes the cellular box's accelerometer (motion sensor) and responds instantaneously to pre-defined conditions related to time, date, location, and can detect hard braking, aggressive acceleration and vehicle impacts. Using Calian's proprietary Route GeoData Compression, TruFleet displays and records the user's whereabouts real-time with 12x resolution versus the competition.



TW400 Mobile IOT Tracker

## TruFleet Features

- Visualize one or all of your vehicles in real-time
- The easy-to-use interface display allows users to create points of interests, click on bread crumbs to see historical data and bookmark common locations
- Replay of historical data based on date & time
- Set up automatic email alerts should users activate an emergency alarm, speed, go outside a geofence, etc.
- When a vehicle activates an emergency message, an audible alert is raised & the location of the vehicle is automatically centered on the map
- Web-based mapping tiles can be configured through Open Street Maps or Google Maps
- Geofences can be easily created & assigned for individual vehicles or fleets & used to trigger an alarm should a driver go off course



Improve Situational Awareness



Enhance Monitoring and Auditing



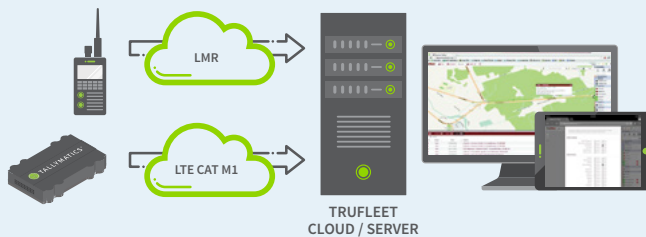
Enhance Safety



Improve Productivity



Reduce Operational Costs



TruFleet's AVL solution is an **integrated software application** installed on a server which tracks the location of a cellular telematic box and/or GPS enabled radios. The solution continuously monitors the vehicle's movements and relays the information through TruFleet which can be viewed on any web browser.

*TruFleet's hardware can be hosted locally or cloud-based with a low monthly fee.*



For over 40 years, Calian has delivered mission-critical solutions when failure is not an option. Trusted worldwide, we empower organizations in critical industries to overcome obstacles, manage risks and drive progress. By combining the expertise of our people, proven industry insight, cutting-edge technology, bold innovation and global reach, we deliver tailored solutions that solve complex challenges. Headquartered in Ottawa, Canada, with over 6,000 people around the world, Calian's solutions protect lives, strengthen security, foster global connectivity and drive economic progress, making a lasting impact where and when it matters most.